

Carrier 30 RA 200

Specifications

| | |
|----------------------|--|
| Brand | Carrier |
| Tipo | 30 RA 200 |
| Product type | Air Cooled Chiller |
| Capacidad kW | 202 |
| Capacity Tons | 57,4 |
| Refrigerante | Freon |
| Tipo de Refrigerante | R407C |
| Módulo hidrónico | ✓ |
| Peso kg. | 2133 |
| Sizes | 3550x2300x1700 mm (LxWxH) |
| Remarks | 5x Compressor Performer SZ185W4PC. yob2002 |
| Stock | 1 |



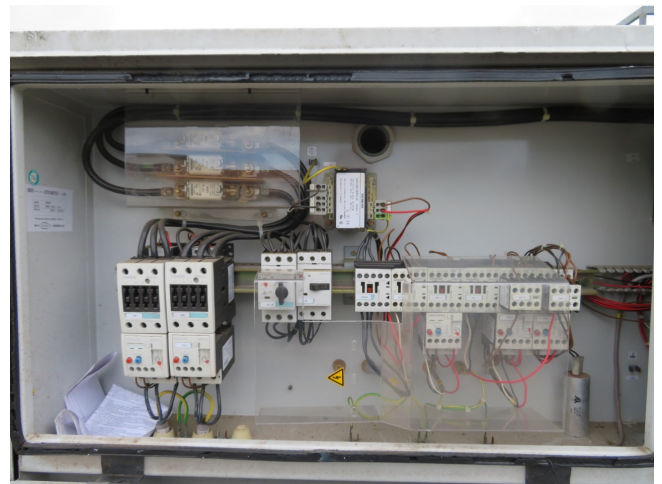
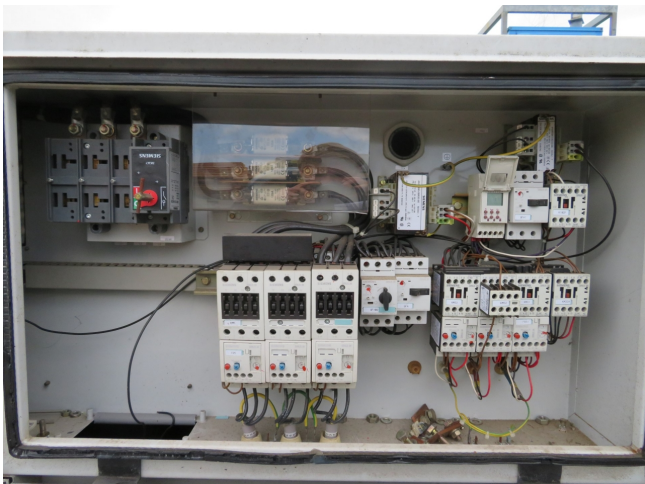
Description

Used Carrier 30 RA 200

Carrier 30 RA 200 Air Cooled Waterchiller. This used Waterchiller has 5 scroll compressors Performer SZ185W4PC, Wilo pump, Carrier Pro Dialog Plus control and liquid buffer tank. yob2002







NAAMPLAAT KOELINSTALLATIE

| | | |
|--|------------|-----|
| INSTALLATIE IDENTIFICATIENUMMER | 804491 | |
| NAAM INSTALLATEUR | | |
| NAAM LEVERANCIER | CARRIER BV | |
| JAAR INSTALLATIE CONTROLE | 2002 | |
| TYPE KOELINSTALLATIE | 30 RA 200 | |
| TYPE KOELMIDDEL | R407C | |
| AANTAL APARTE KOELCIRCUITS | A | 3 |
| NADERE AANDUIDING PER KOELCIRCUIT | — | — |
| HOEVEELHEID VULLING (Kg) PER KOELCIRCUIT | 210 | 280 |

 CARRIER BV
HAZERSWOUDE-RIJNDIJK

NAAMPLAAT KOELINSTALLATIE

| | | |
|--|------------|-----|
| INSTALLATIE IDENTIFICATIENUMMER | 804490 | |
| NAAM INSTALLATEUR | | |
| NAAM LEVERANCIER | CARRIER BV | |
| JAAR INSTALLATIE CONTROLE | 2002 | |
| TYPE KOELINSTALLATIE | 30 RA 200 | |
| TYPE KOELMIDDEL | R407C | |
| AANTAL APARTE KOELCIRCUITS | A | 3 |
| NADERE AANDUIDING PER KOELCIRCUIT | — | — |
| HOEVEELHEID VULLING (Kg) PER KOELCIRCUIT | 210 | 280 |

 CARRIER BV
HAZERSWOUDE-RIJNDIJK